

FOR SALE

10.1 ACRES - McAllen, TX

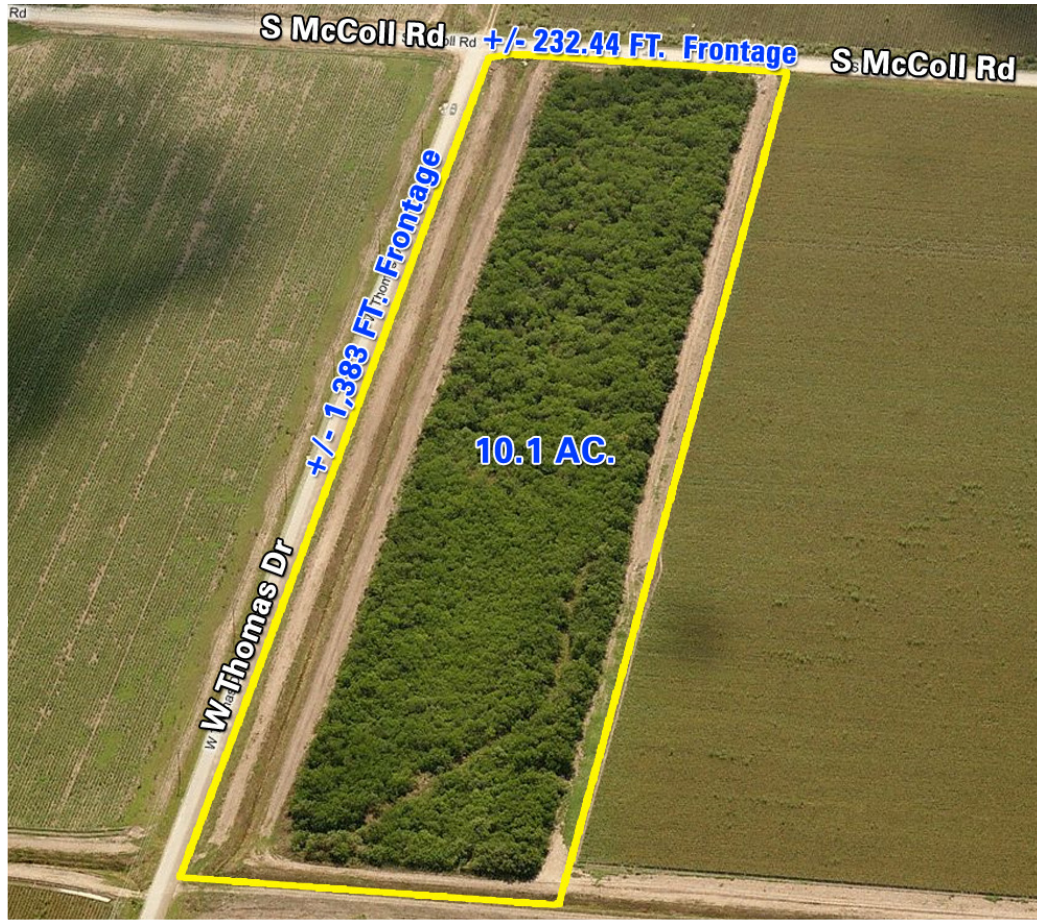
PROPERTY DESCRIPTION

- Approximately 10.1 Acres (440,000 SF)
- Located on the northeast corner of the new S. McColl Road and W. Thomas Drive, Hidalgo County, McAllen, TX
- 232.44' Frontage on McColl Road with curb, gutter and cut for driveway access.
- 1,383' Frontage on Thomass Road with multiple driveway access.
- There is a County storm drain at the rear of the property that is 75' wide and will provide storm drainage for any development on this site.

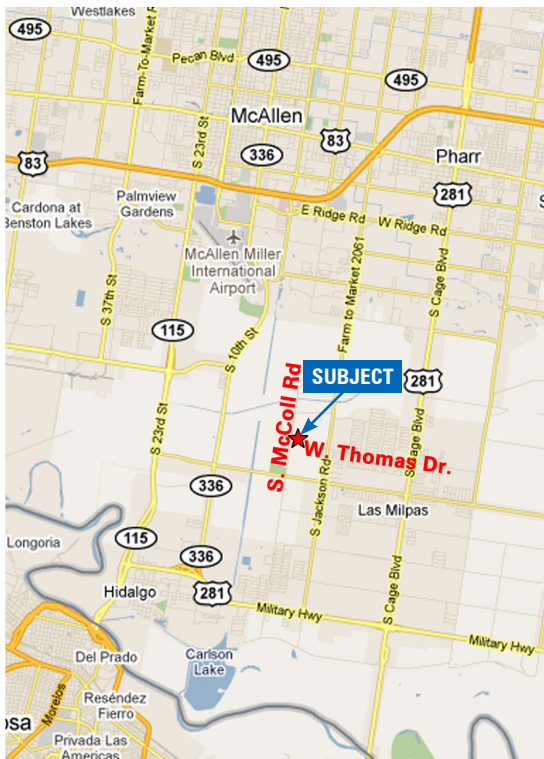
SALE PRICE

\$549,500

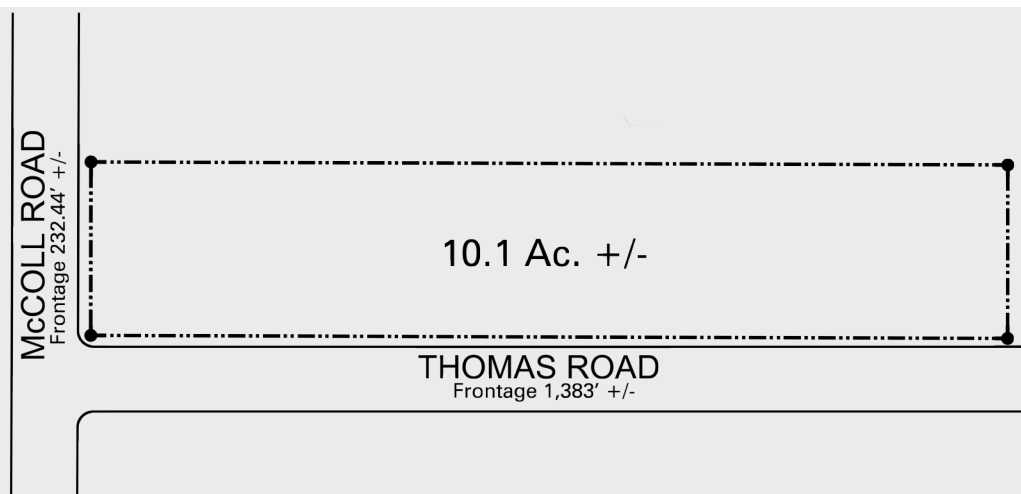
Terms may be arranged with approved credit of 50% down and the balance paid over 3 years



LOCATION MAP



PLAT MAP



Acquisition - Development - Management Since 1957