

FOR SALE

BEAUTIFUL & ENERGY EFFICIENT NEW HOMES

**19 Persimmon Drive
Wimberley, TX 78676**

Nestled on a quiet wooded lot in the Woodcreek subdivision, just a short walk from Jacob's Well and Parks is our first 1,400 SF, 3-bedroom, 2-bath new home.

Shopping is close by, with the City of Wimberley just 2.25 miles away!

Our homes feature welcoming front porches, 9-foot ceilings throughout, with cathedral ceilings in the living/dining rooms, large bedrooms with generous closets, wide hallways and spacious bathrooms.

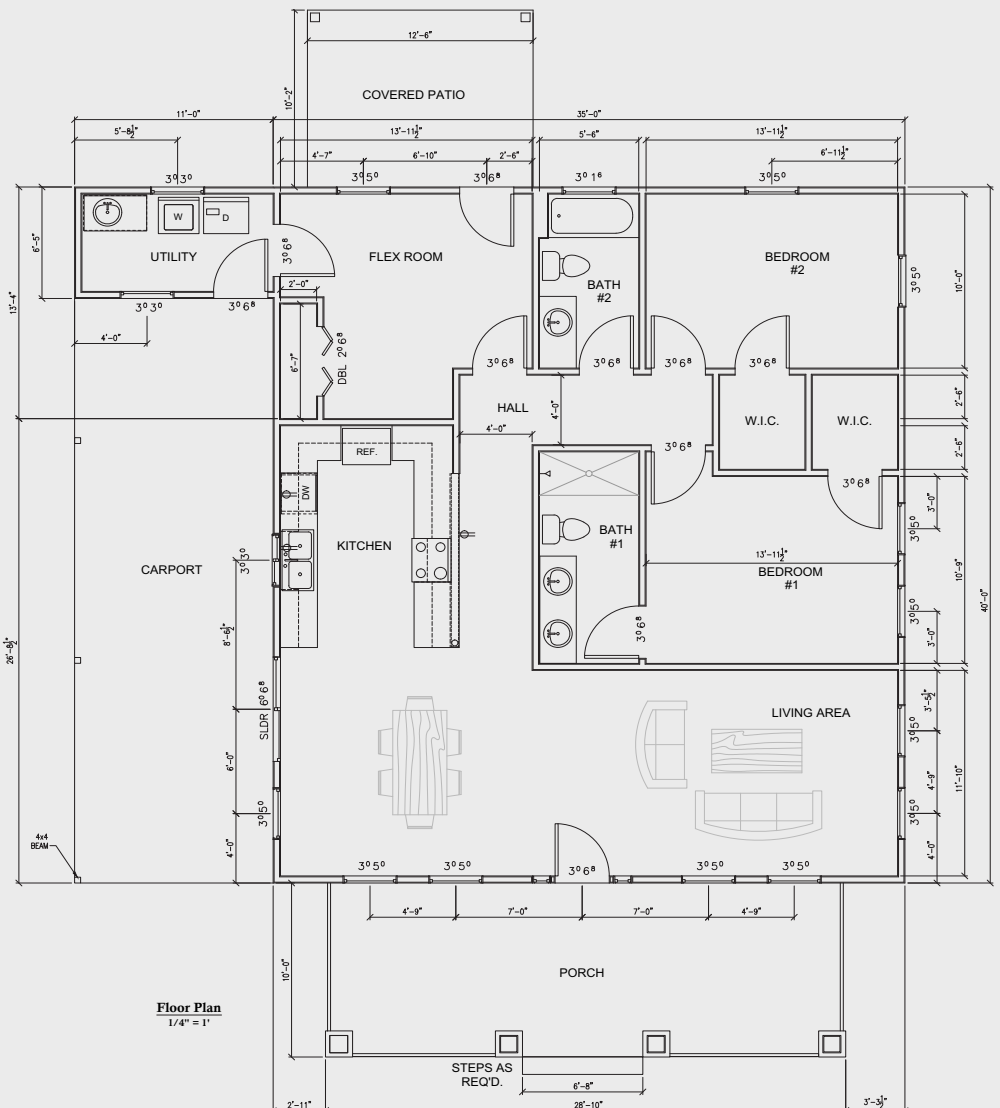
These homes have been built with energy efficiency in mind. Closed - cell foam insulation, Low - E windows, high - efficiency HVAC, low - maintenance exterior, and low water consumption fixtures make the monthly operating costs lower than older homes or apartments.

Enjoy the beauty of the Texas Hill Country in your own brand new home for just:

\$162,500
Base Price



FLOOR PLAN



FOR SALE

BEAUTIFUL & ENERGY EFFICIENT NEW HOMES

WIBERLEY SCHOOL DISTRICT

These new homes are in the acclaimed Wimberley School District, which has just been rated with four "Recognized" schools, has an excellent athletics program and outstanding extra-curricular programs for students with varied interests.

JACOB'S WELL AND PARK

The Well and Park is open to the public, free of charge and covers 55 acres. The Park provides public tours, swimming, picnic areas, gorgeous natural sites and nature walks.

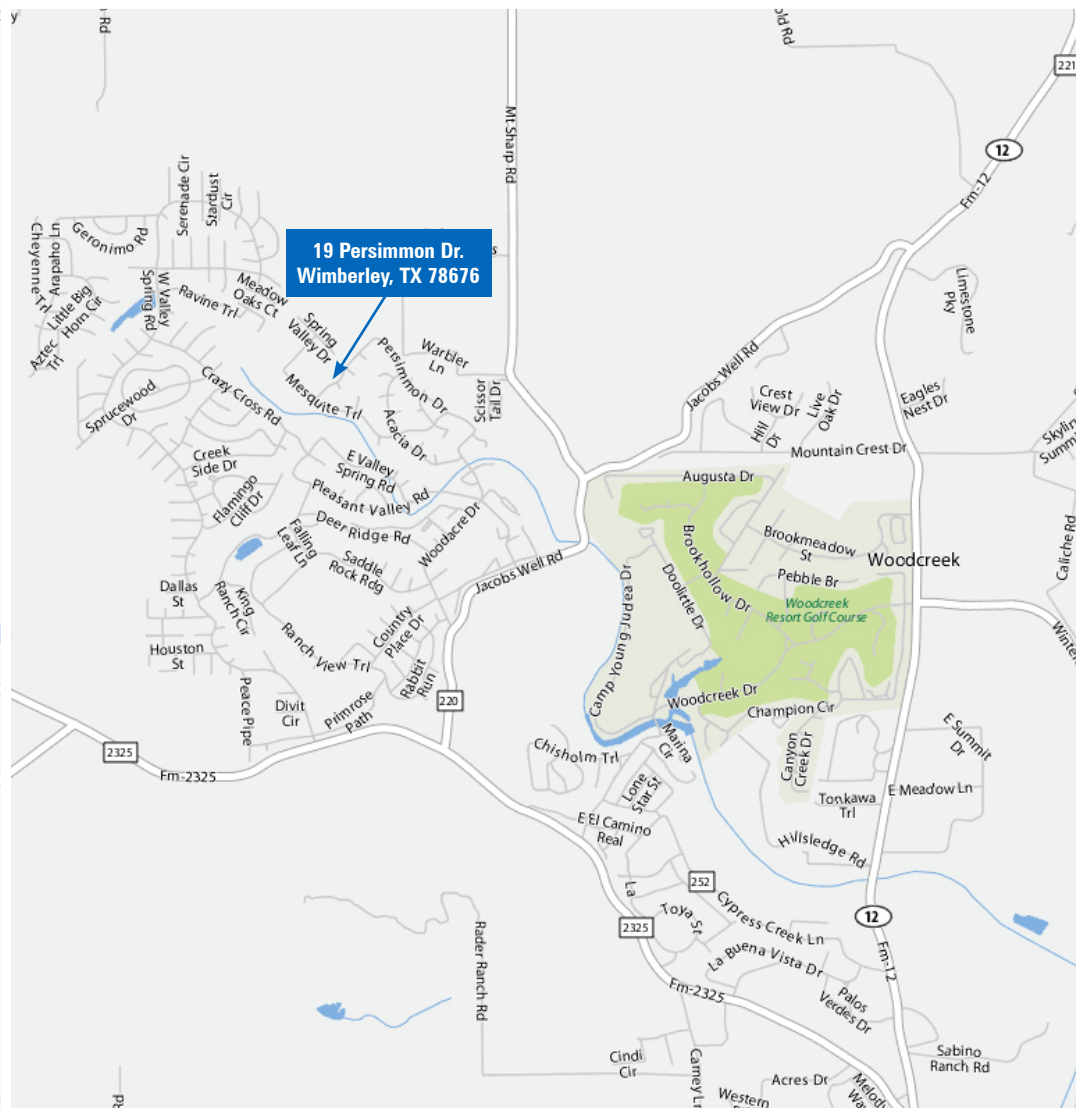
WOODCREEK SUBDIVISION

A wonderful home for young families or for empty-nesters, Woodcreek is a desirable destination for anyone seeking the peace and quiet of country life.

4% Commission to Buyer's Agents



LOCATION MAP



Acquisition - Development - Management Since 1957